

**Open  
Type**

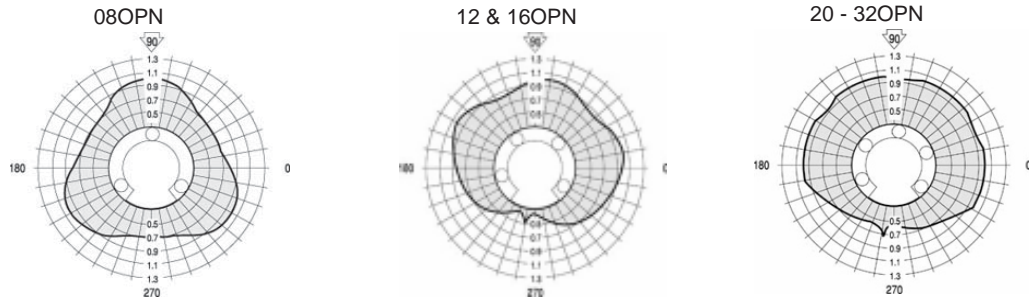


**Dimensions (Inches)**

Part Number		Shaft Dia. d	Outside Dia. D	Length C	Retaining Ring Groove Width C1	Distance Between Retaining Ring Grooves C2	Bearing Mass (lb)	Housing Bore Diameter Norm. fit	Maximum Dynamic Load Capacity (lb) (1)
Without Wipers	With Wipers								
OPN81420	OPN81420DD	.4995/.4990	.8750/.8746	1.250	.046	.967/.951	.07	.8760/.8740	60
OPN122026	OPN122026DD	.7495/.7490	1.2500/1.2496	1.625	.056	1.170/1.154	.17	1.2510/1.2490	140
OPN162536	OPN162536DD	.9995/.9990	1.5625/1.5621	2.250	.068	1.759/1.741	.32	1.5635/1.5615	240
OPN203242	OPN203242DD	1.2495/1.2490	2.0000/1.9995	2.625	.068	2.009/1.991	.90	2.0010/1.9990	400
OPN243848	OPN243848DD	1.4994/1.4989	2.3750/2.3745	3.000	.086	2.415/2.397	1.12	2.3760/2.3740	600
OPN324864	OPN324864DD	1.9940/1.9987	3.0000/2.9994	4.000	.103	3.195/3.177	2.16	3.0010/2.9990	800

1. Load ratings are based upon 2 million inches of travel and a shaft hardness of HRC60 or more. The actual load rating is dependant upon the direction of the applied load relative to the bearing's ball track locations. See the polar charts below for appropriate derating factors.

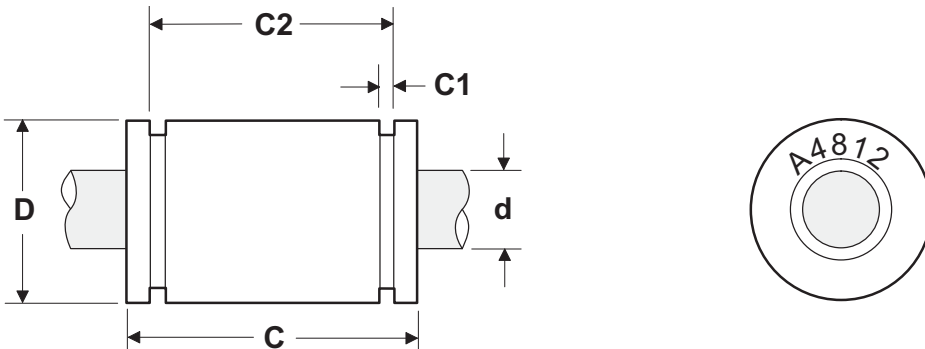
**ALL Open-type bearings have polymer ball retainers**



The specifications and data in this publication are believed to be accurate and reliable. However, it is the responsibility of the user to determine the suitability of the product for a specific application. While defective product will be replaced without charge, no liability is assumed beyond such replacement.

# PRECISION STEEL LINEAR BEARINGS

Closed  
Type

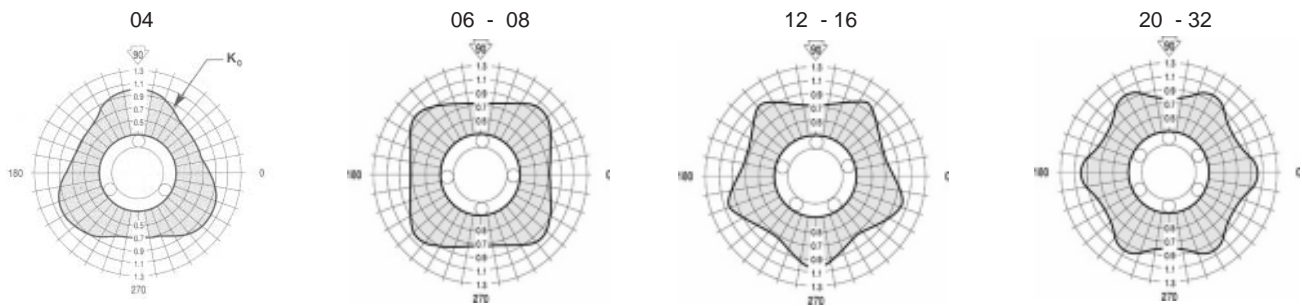


## Dimensions (Inches)

Part Number		Shaft Dia. <b>d</b>	Outside Dia. <b>D</b>	Length <b>C</b>	Retaining Ring Groove Width <b>C1</b>	Distance Between Retaining Ring Grooves <b>C2</b>	Bearing Mass (lb)	Housing Bore Diameter Norm. fit	Maximum Dynamic Load Capacity (lb) (1)
A4812	A4812DD	.2490/.2485	.5000/.4996	.750	.039	.515/.499	.02	.5005/.5000	19
A61014	A61014DD	.3740/.3735	.6250/.6246	.875	.039	.640/.624	.06	.6255/.6250	36
A81420	A81420DD	.4990/.4985	.8750/.8746	1.250	.046	.967/.951	.08	.8755/.8750	85
A122026	A122026DD	.7490/.7485	1.2500/1.2496	1.625	.056	1.170/1.154	.21	1.2505/1.2500	200
A162536	A162536DD	.9990/.9985	1.5625/1.5621	2.250	.068	1.759/1.741	.38	1.5630/1.5625	350
A203242	A203242DD	1.2490/1.2485	2.0000/1.9995	2.625	.068	2.009/1.991	1.10	2.0010/2.0000	520
A243848	A243848DD	1.4989/1.4984	2.3750/2.3745	3.000	.086	2.415/2.397	1.43	2.3760/2.3750	770
A324864	A324864DD	1.9987/1.9980	3.0000/2.9994	4.000	.103	3.195/3.177	2.75	3.0010/3.0000	1100

1. Load ratings are based upon 2 million inches of travel and a shaft hardness of HRC60 or more. The actual load rating is dependant upon the direction of the applied load relative to the bearing's ball track locations. See the polar charts below for appropriate derating factors.

**A4812, A61014 and ALL bearings with wipers (DD) have polymer ball retainers**



The specifications and data in this publication are believed to be accurate and reliable. However, it is the responsibility of the user to determine the suitability of the product for a specific application. While defective product will be replaced without charge, no liability is assumed beyond such replacement.

